



# EinScan *LIBRE*

All-in-One Laser 3D Scanner: Wireless, Markerless, Full-Color

Get ready, get Libre!





# Get ready, get Libre!

The EinScan Libre delivers a fully wireless, standalone 3D scanning experience, powered by its built-in screen and NVIDIA processor. It offers the perfect balance of freedom and efficiency, ensuring reliable results with versatile, user-friendly operation. Equipped with both laser and infrared light, the device adapts to a wide range of materials and excels at capturing detailed textures. Its Laser HD mode supports texture alignment during scanning, improving accuracy on complex surfaces. The EinScan Libre is the first standalone 3D scanner on the market to support texture alignment.





# Cut the Cord, Go Wireless

## 5.5-inch OLED display

Capture, view, and manage your scans effortlessly with its user-friendly touchscreen designed UI.

## Embedded computing system

Scan and process independently, with all functions built into the device—no laptop required.

## Rechargeable batteries

No time for downtime? Just reload and keep scanning.

Slide your batteries into the convenient charging dock and be ready to scan at all times.

# Brains Behind the Speed

Equipped with a high-performance processor and generous storage, the EinScan Libre provides wireless freedom without compromising computing speed.

## Powerful NVIDIA processor

The integrated Jetson Orin NX 16GB, 8-core CPU and Ampere GPU with 1024 CUDA cores deliver fast data processing.



## 1TB SSD

Room to roam. With expansive storage, you can scan freely without worrying about running out of space—whether high-res models or hefty projects.





# All Modes On Deck

Switch between the EinScan Libre's three versatile scan modes to cover object sizes ranging from 0.1m to over 10m. These IR (infrared) and laser modes help the scanner adapt to all kinds of materials, whether you're indoors or outdoors in direct sunlight.

Scan Data



## Laser HD Mode

Revolutionary 101 parallel laser lines enable markerless, high-detailed scanning with rich texture.



Resolution up to  
**0.05 mm**

Blue laser lines  
**101**

Scan Data



## IR Rapid Mode

Ideal for larger areas, this mode offers marker-free and high-efficiency scanning with invisible, eye-safe infrared light. It's less sensitive to ambient light, making it perfect for outdoor use.

Working distance up to

**1.5m**

FOV

**983 x 979 mm**

Scan Data



## IR Adaptive Mode

Ideal for reflective and black surfaces, delivering reliable results.

IR laser lines

**38**

Volumetric accuracy up to

**0.04 + 0.06 mm/m**



# Complete On-Device Workflow

## Mesh data output

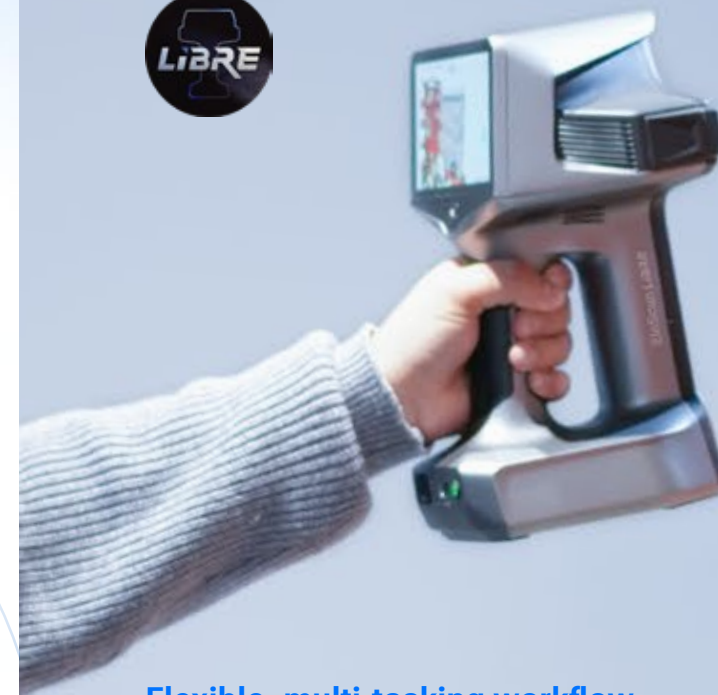
Generate mesh data with a single click, completing the entire process on the device without the need for a PC.

## Quick data editing

Edit scan data directly on the device, simplifying the workflow.



# Enhanced PC Integration



## Flexible, multi-tasking workflow

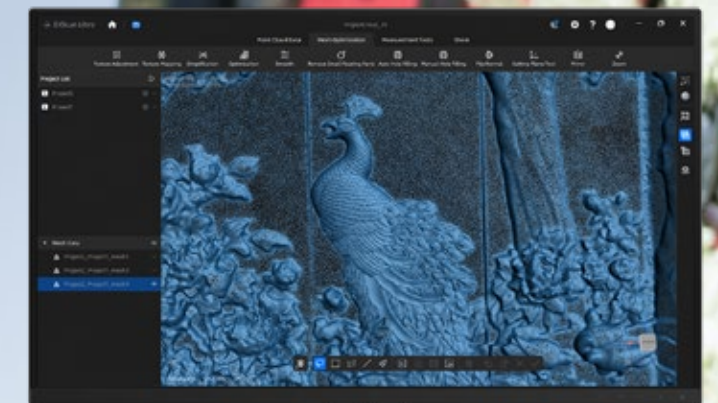
Experience greater flexibility beyond single-threaded operations.

## Multi-resolution fusion

Effortlessly combine scans with different resolutions across various modes for enhanced results.

## Resource-efficient system

Delivers smooth performance without the need for high-spec computers.





## Lifelike Color Reproduction

Experience high-resolution color capture with the EinScan Libre. Equipped with a 48MP color camera, it delivers lifelike color fidelity, capturing every detail with clarity and vibrant colors. The EinScan Libre ensures your scans reflect the full richness of the scene or object you're scanning.

**48  
MP** Color  
Camera



## Where Wireless Meets Accuracy

Experience the perfect blend of freedom and accuracy with the EinScan Libre. This advanced wireless scanner delivers an impressive volumetric accuracy of up to  $0.04 + 0.06$  mm/m, ensuring that every detail is captured with pinpoint precision. Whether working on intricate designs or complex projects, the EinScan Libre provides the reliability and accuracy you need, all in a truly wireless device.





# EinScan Libre

Get ready, get Libre!



Archaeology & Heritage Preservation



Manufacturing



Energy



Forensics



Architecture & Engineering & Construction



Infrastructure



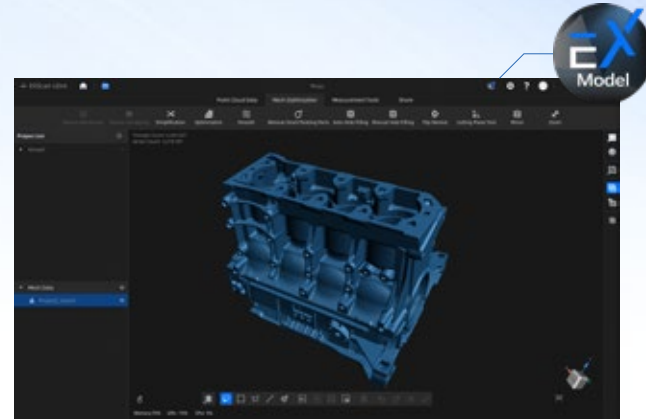
Art & Design



CGI

# EXModel

EXModel is a powerful bridge that simplifies CAD modeling from 3D scanning to manufacturing. With the integration of EXScan Libre, you can now seamlessly import data to EXModel with a single click after completing a scan. EXModel offers a comprehensive set of tools that enable you to create professional-grade CAD digital models that are compatible with your CAD software.



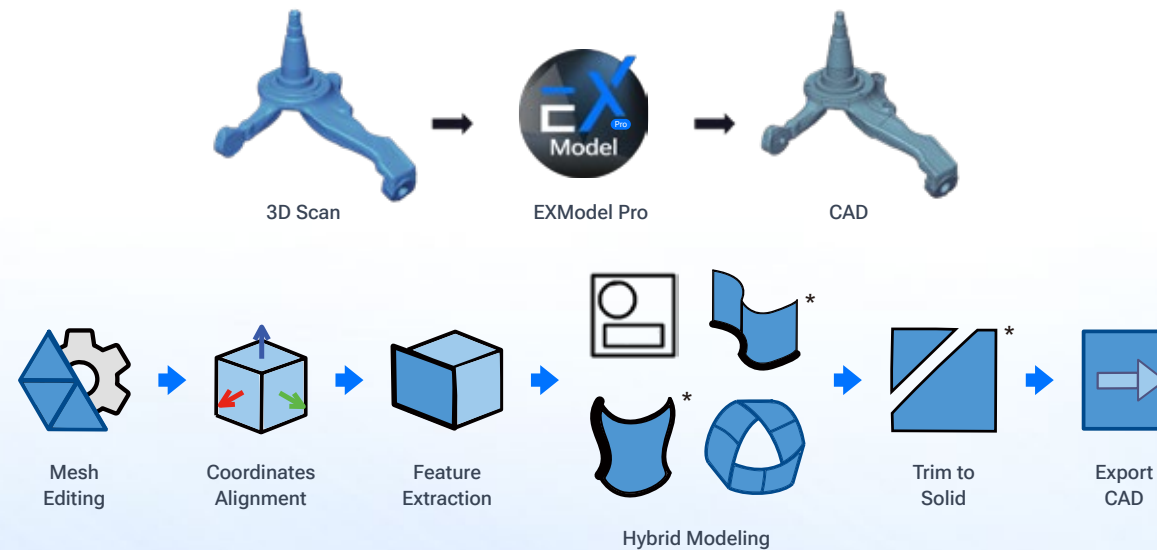
**Effortless Mesh Processing**

**Precision CAD Creation**

**Enhanced Data Utilization**

**Cost-Effective Solution**

## Workflow



\*30 days Free Trial is available to apply to EXModel.

\*Function features marked with asterisk are available in EXModel Pro.

# TECHNICAL SPECIFICATIONS EinScan Libre

Scan Mode/Light Source	IR Rapid: IR VCSEL	IR Adaptive: 38 IR laser lines	Laser HD: 101 blue laser lines
Resolution (Point Distance)	0.5 ~ 10 mm	0.5 ~ 10 mm	0.05 ~ 3.0 mm
Scan Speed	2,700,000 points/s	1,900,000 points/s	4,500,000 points/s
FOV	370 × 470- 983 × 979 mm	370 × 470- 779 × 835 mm	165 × 200 - 382 × 450 mm
Working Distance	500 ~ 1500 mm	500 ~ 1200 mm	200 ~ 500 mm
Align Mode	Markers / Global Markers / Feature / Texture / Hybrid	Markers / Global Markers	Markers / Global Markers / Feature / Texture / Hybrid
3D Camera Resolution	5 MP		
Color Camera Resolution	48 MP		
Volumetric Accuracy	Up to 0.04 + 0.06 mm/m		
Output Formats	STL; OBJ; PLY; 3MF; ASC; LAS		
Software	Device installed scanning software PC software EXScan Libre		
Laser Class	Class II (eye safe)		
Hardware	Processor: NVIDIA Jetson Orin NX, 8-core Arm Cortex A78AE, Ampere GPU with 1024 CUDA cores, 100 TOPS; Internal hard drive: 1TB SSD; Display: Built-in 5.5" HD OLED touch screen; Interface: Wi-Fi 6, USB-C, USB 3.0, Gigabit Ethernet; Power Source: 2 rechargeable batteries with scanning time of 3 hours. Supports charging via USB-C power banks or 100W PD3.0 fast charge adapters; Scanner weight: 1.8 kg (including battery), 1.6 kg (excluding battery); Scanner size: 162 × 182 × 266 mm		
Recommended Configuration for PC Program	CPU: intel i7-11700 or higher; GPU: NVIDIA GTX 1070 or higher; VRAM: 6GB or more; RAM: 32 GB or more; OS: Window 10 or 11 (64-bit)		

\*No need to connect to power or computer during scanning.

EinScan Libre-EN 20241023-V1.0

주식회사 프로토텍